



2015 Capital Request

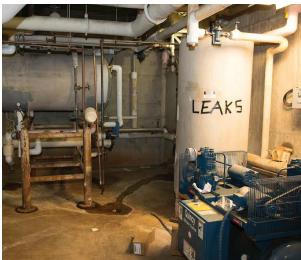
UNIVERSITY OF MINNESOTA
Driven to DiscoverSM



Higher Education Asset Preservation and Replacement (HEAPR)

\$55 million in state funding

Maximize the effectiveness and extend the life of the University of Minnesota's 29 million square feet of infrastructure. The University allocates HEAPR funding systemwide using a formula based on total campus square footage and facility condition. HEAPR projects fall into four categories: (1) health, safety, and accessibility; (2) building systems; (3) utility infrastructure; and (4) energy efficiency.



Veterinary Isolation Laboratories Replacement

\$18 million in state funding

Replace two obsolete veterinary isolation laboratories with a new biocontainment facility in St. Paul including large and small animal holding spaces. This new facility will allow Minnesota to become a leader in infectious diseases research and will protect the health of Minnesotans and livestock.



St. Paul Greenhouse Replacement

\$4 million in state funding

Build an efficient greenhouse to protect and provide access to the University's rare-plant collection. This new facility will provide hands-on learning opportunities for Minnesota's future plant geneticists, growers, and environmental scientists.

| Project name | Project Total | U of M Investment | Request |
|--|---------------|-------------------|--------------|
| HEAPR | \$55M | NA | \$55M |
| Veterinary Isolation Labs Replacement | \$27M | \$9M | \$18M |
| St. Paul Greenhouse Replacement | \$6M | \$2M | \$4M |
| TOTALS | \$88M | \$11M | \$77M |

Projects are listed in priority order.

govrelations.umn.edu

@umngovrelations

govrelations@umn.edu

612-626-9234