

2016 Capital Request

House Capital Investment Committee

March 3, 2016

2016 Capital Request



Thank You



Minnesota Poultry Testing Lab

Veterinary Isolation Labs



2016 Capital Request



Goals and Vision

- Fiscally responsible and a thoughtful steward of our assets
- One of the state's most ambitious job creators in the health care and STEM fields
- Tackle and solve some of the state's most pressing needs and challenges

2016 Capital Request



Priorities

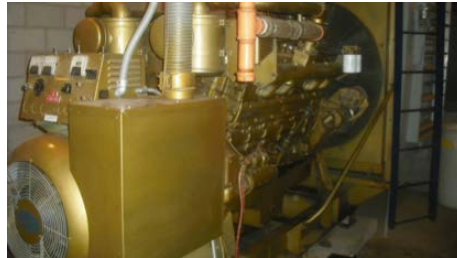
- Promoting asset renewal
- Create modern learning spaces for our students
- Invest in our health sciences to help keep our state healthy
- Drive the state's STEM strengths

2016 Capital Request



Higher Education Asset Preservation and Replacement (HEAPR)

- **State request: \$100 million**



2016 Capital Request



Academic and Student Experience Investments

- **State request: \$16 million**
 - University investment: \$8 million
 - Project total: \$24 million



2016 Capital Request



Pillsbury Hall Renovation

- **State request: \$22 million**
 - University investment: \$11 million
 - Project total: \$33 million



2016 Capital Request



Health Sciences Education Facility

- **State request: \$66.7 million**
 - University investment: \$33.4 million
 - Project total: \$100 million



2016 Capital Request



Chemistry and Advanced Materials Science Building

- **State request: \$27.2 million**
 - University investment: \$13.6 million
 - Project total: \$40.8 million



2016 Capital Request



Plant Growth Research Facility

- **State request: \$4.4 million**
 - University investment: \$2.2 million
 - Project total: \$6.6 million



2016 Capital Request



2016 Capital Request

Project name	Project Total	University Investment	State Request
HEAPR	\$100.00	-	\$100.00
Chemistry and Advanced Materials Science	\$40.80	\$13.60	\$27.20
Health Sciences Education Facility	\$100.00	\$33.40	\$66.70
Plant Growth Research Facility	\$6.60	\$2.20	\$4.40
Academic and Student Experience Investments	\$24.00	\$8.00	\$16.00
Pillsbury Hall Renovation	\$33.00	\$11.00	\$22.00
TOTAL	\$304.40	\$68.20	\$236.30

*Projects are listed in priority order.
Dollar amounts are in millions and rounded up. Columns may not tally due to rounding.*

2016 Capital Request



Impact in your districts

Here is how the University of Minnesota impacts the economy in your districts

40,461

U of M alumni living in your districts

51,766

U of M degrees earned by those alumni

3,422

U of M staff members living in your districts

6,080

Current U of M students from your districts



2016 Capital Request



Thank you

govrelations.umn.edu

@UMNGovRelations

2016 Capital Request



UNIVERSITY OF MINNESOTA
Driven to Discover™