



2016 Capital Request

UNIVERSITY OF MINNESOTA
Driven to DiscoverSM

Academic and Student Experience Investments

The U of M faces a
SHORTAGE
of shared, multiuse research facilities

NEW LABORATORIES
and teaching spaces will attract top faculty
and enhance the student experience

**ACROSS ALL RESEARCH DISCIPLINES,
WE'RE TACKLING THE BIG CHALLENGES
FACING OUR STATE AND WORLD**

2/3 of U of M graduates stay in
Minnesota and become our
state's talent pool

Existing, underutilized
spaces are cost-
efficient locations
for updating

To attract top faculty and prepare students to solve the
complex scientific problems they'll face in their future
careers, we need modern, technology-rich classrooms on
all University of Minnesota campuses.



Academic and Student Experience Investments

Project Description

Modernize existing teaching, research, outreach, and student support spaces on the University of Minnesota's Crookston, Duluth, Morris, and Twin Cities campuses.

Benefits

- Provide new learning opportunities for students across Minnesota
- Improve student learning outcomes
- Increase competitively awarded sponsored research grants
- Maximize best and highest use of existing space

Project Examples

Crookston

- Convert a decommissioned kitchen to shared undergraduate research space to support growing STEM programs

Duluth

- Renovate A.B. Anderson, a heavily utilized, 1968 general classroom building, to include active learning classrooms

Morris

- Convert Blakely Hall, an old dormitory, into state-of-the-art, K-12 teacher training facilities including classrooms, a curriculum center and an observation room

Twin Cities

- Modernize teaching and research laboratories in the Biological Sciences Center

State request: \$16 million

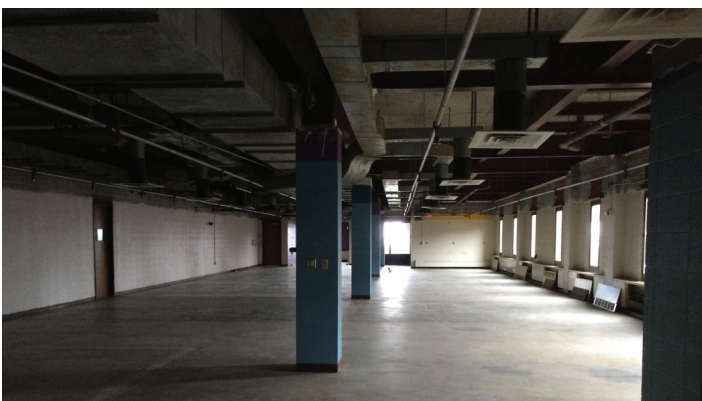
- University investment: \$8 million
- Total project cost: \$24 million



Poor space configuration and outdated building systems hamper research in existing biology labs.



Crookston's Epicurean Room is an ideal location for programmatic investment.



This decommissioned library space is a prime location for modern research laboratories.