

# 2016 Capital Request

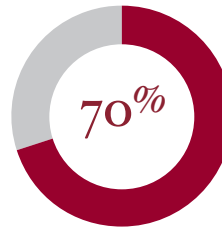
UNIVERSITY OF MINNESOTA  
Driven to Discover<sup>SM</sup>

## Health Sciences Education Facility

6,200 health sciences  
**STUDENTS**  
are educated at the U of M each year

U of M education and training facilities are over  
**40 YEARS OLD,**  
outdated, and obsolete

**WE'RE KEEPING MINNESOTA HEALTHY  
BY LEADING IN PATIENT CENTERED,  
TEAM-BASED CARE.**



of Minnesota's  
health professionals  
are trained at the  
U of M

The U of M Academic  
Health Center is  
among the most  
comprehensive in  
the nation

Together, the University of Minnesota's health sciences  
schools form one of the nation's great centers. Our patient-  
centered teams collaborate across the health professions to  
produce fundamental advances in care for individuals and  
communities, as we educate and train students to meet  
our state's growing and rapidly changing  
health care needs.



# Health Sciences Education Facility

## Project Description

### Construct and renovate educational facilities

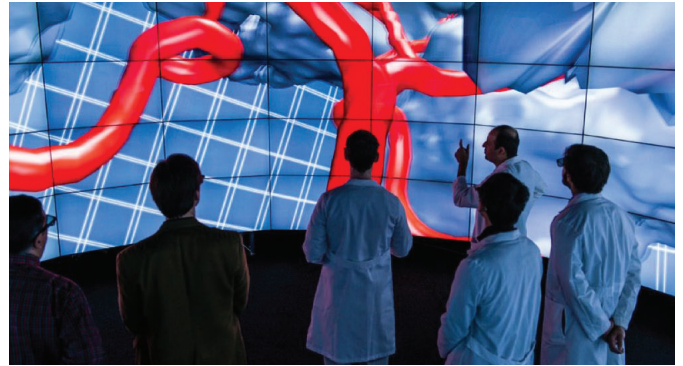
- Replace over 100,000 square feet of outdated facilities that do not support fundamental changes under way in the education and training of health care professionals
- Build active-learning classrooms, simulation centers, small group rooms, a technology-rich health sciences library and learning commons, and spaces for student services and amenities
- Support interdisciplinary learning across all health science professions
- Provide state-of-the-art facilities to prepare students for the health care world of tomorrow

## Benefits

- Educate students and current practitioners in patient centered, team-based care and collaboration across the health professions
- Prepare the workforce to meet Minnesota's growing and rapidly changing health care needs
- Set the national standard for interactive, engaged health education and training
- Compete to recruit and retain the best students and faculty
- Meet new, more stringent national accreditation requirements for health sciences schools
- Provide more efficient, student-centered education
- Incorporate the latest health research and new care models into the education and training of health care professionals

### State request: \$66.7 million

- University investment: \$33.3 million
- Total project cost: \$100 million



*Data visualization relies on technology-intensive infrastructure to engage learning and clinical practice skills.*



*Active learning classrooms allow peer to peer learning. Outcomes are improved when students engage with faculty and each other, across all disciplines.*



*Simulation spaces that replicate patient care assist students in building familiarity with a clinical environment early in their learning careers.*